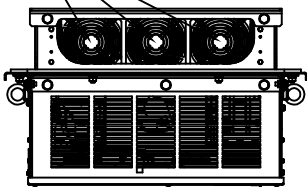
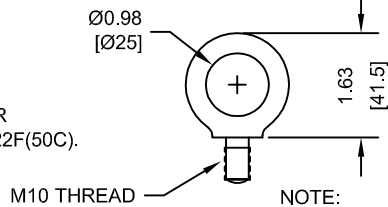


(3) EXTERNAL COOLING FANS

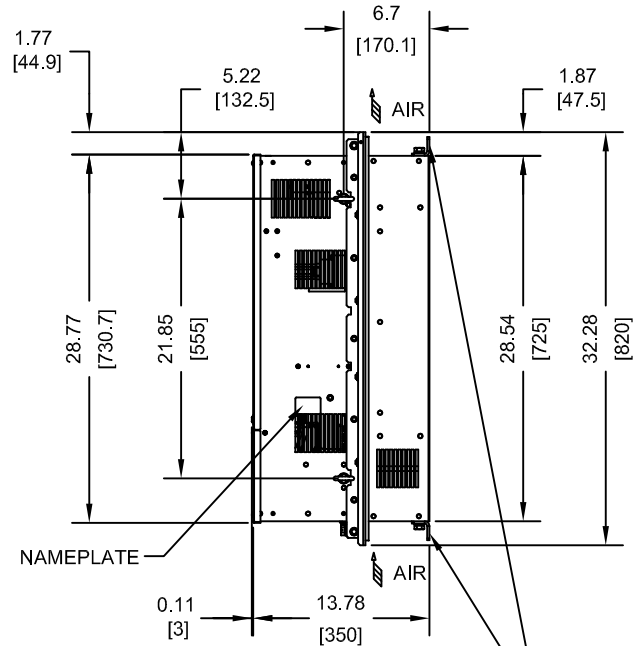
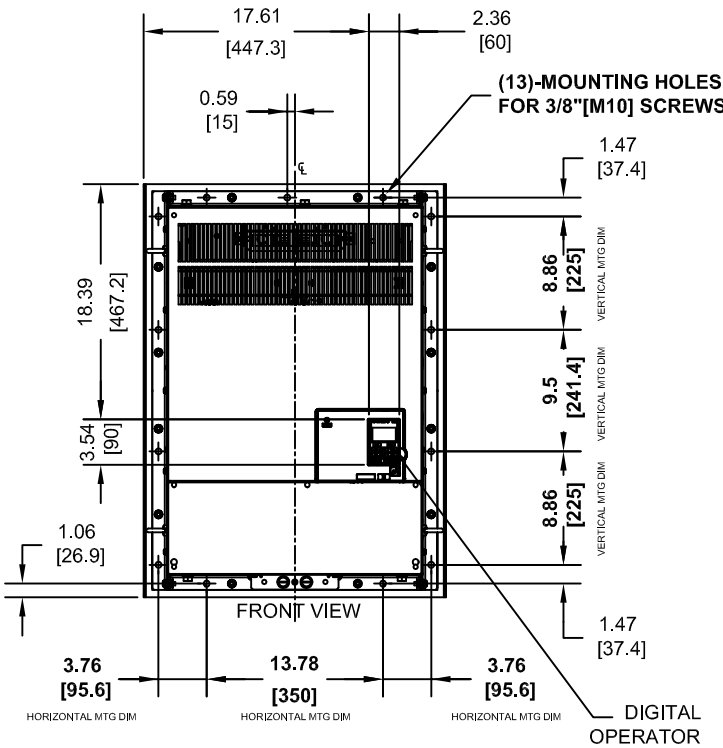


LIFTING AND EYEBOLT DETAILS

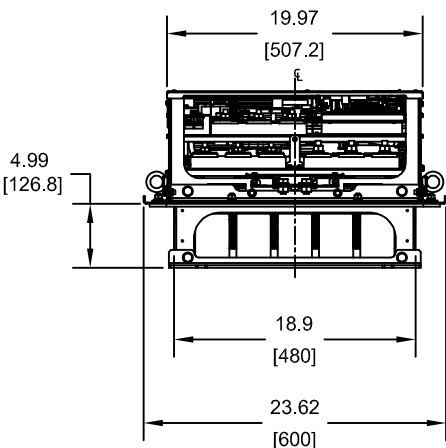


NOTE:
MAXIMUM SURROUNDING AIR
TEMPERATURE RATING IS 122F(50C).

NOTE:
SPREADER BAR REQUIRED TO
AVOID DAMAGE DURING LIFTING



(2)-MOUNTING BRACKETS
USED DURING TRANSPORT ONLY
REMOVE BEFORE INSTALLING



| MODEL # CIMR-PU | INPUT TYPE | VOLTAGE 3-PHASE (VAC) | OUTPUT CURRENT (A) | WEIGHT LBS (Kg) | HEAT LOSS (W) (Fc=2kHz) | | |
|--------------------|---------------|-----------------------------|--------------------------|--------------------|----------------------------|------|------|
| | | | | | INT | EXT | TOT |
| 2A0360UXX | 6 PULSE | 200/240 | 360 | 238 (108) | 894 | 2698 | 3592 |
| 2A0415UXX | 6 PULSE | | 415 | 251 (114) | 954 | 2672 | 3626 |
| 4A0250UXX | 6 PULSE | | 250 | 233 (106) | 803 | 2379 | 3182 |
| 4A0296UXX | 6 PULSE | | 296 | 246 (112) | 905 | 2448 | 3353 |
| 4A0362UXX | 6 PULSE | | 362 | 257 (117) | 1130 | 3168 | 4298 |
| 4T0250UXX | 12 PULSE | | 250 | 198 (90) | 729 | 2305 | 3034 |
| 4T0296UXX | 12 PULSE | 380/480 | 296 | 209 (95) | 772 | 2308 | 3080 |
| 4T0362UXX | 12 PULSE | | 362 | 214 (97) | 874 | 3168 | 4042 |
| 5A0192UXX | 6 PULSE | | 192 | 257 (117) | 769 | 2420 | 3189 |
| 5A0242UXX | 6 PULSE | 500/600 | 242 | 257 (117) | 1131 | 3100 | 4231 |

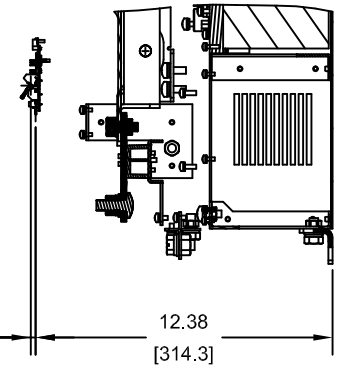
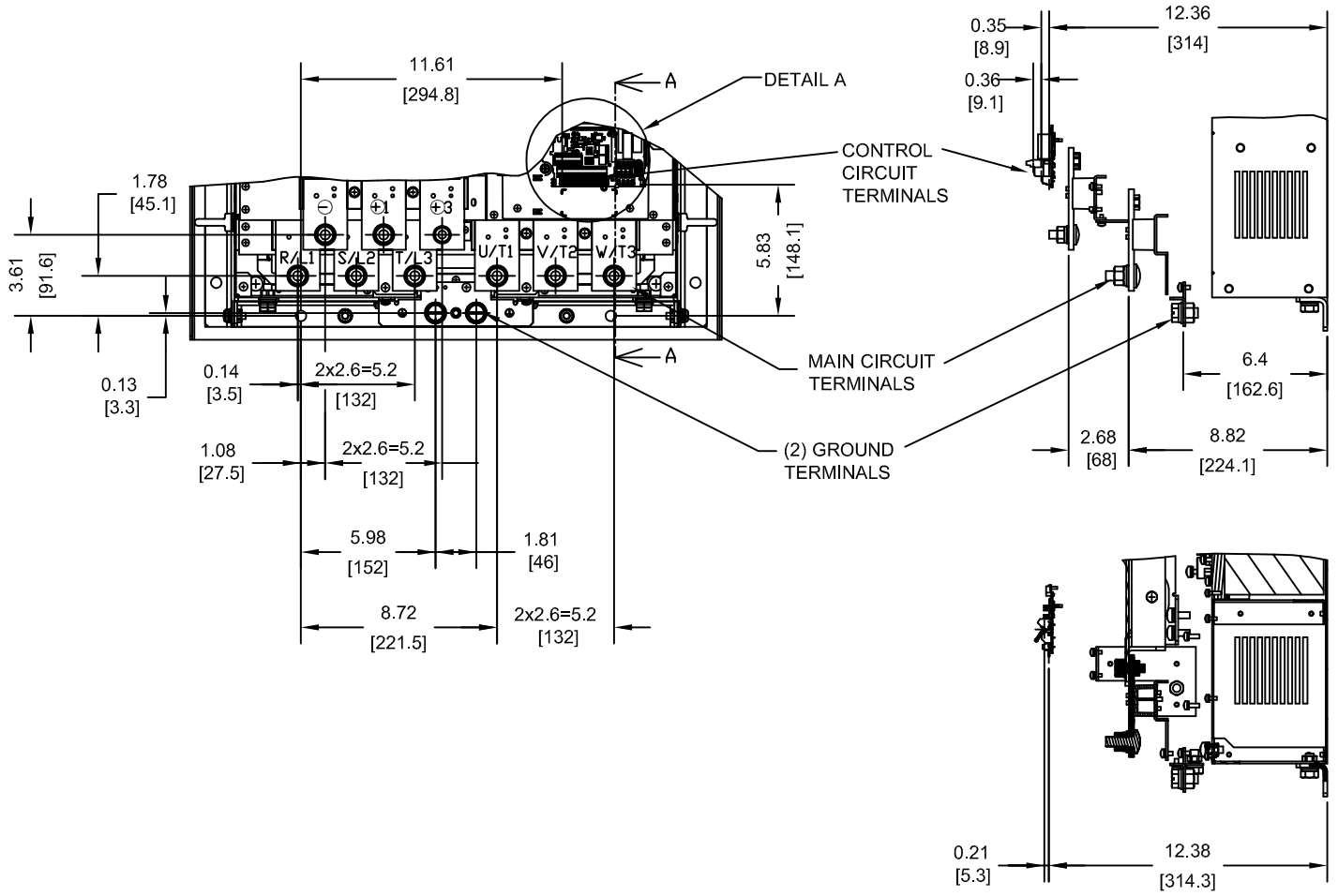
NOTES:
XX DENOTES AA-ZZ

INT=INTERNAL COMPONENTS
EXT=EXTERNAL HEATSINK
TOT=TOTAL

FOR ADDITIONAL DETAILS AND SPECIFICATIONS, CONSULT MANUAL

| | | | | |
|--|----------------|--|--|--------------------------------|
| TOLERANCES / REFERENCES: | | DRAWN: J. MATTAS DATE: 11-13-12 | TITLE: P1000 DIMENSION DRAWING | |
| | | CHECKED: J. PIOTROWSKI DATE: 1-18-13 | FRAME SIZE 12 DESIGNED FOR IP54/TYPE 12 ENCLOSURES | |
| | | TECH: J. BORJA DATE: 1-22-13 | 2A0360U-0415U, 4A0250U-0362U, 4T0250U-0362U, 5A0192U-0242U | |
| | | APPROVED: J. CAIRO DATE: 5-29-13 | SIZE A | REVISION R00 |
| UNITS: IN [mm] | SCALE: 1:15 | ORIGINAL DESIGN: - | DATE: - | DRAWING #: DD.P1K.FR12.FLNG |
| THIS DOCUMENT AND INFORMATION CONTAINED IN IT ARE CONFIDENTIAL, AND CANNOT BE COPIED OR DISCLOSED IN WHOLE OR IN PART WITHOUT THE EXPRESS WRITTEN CONSENT OF YASKAWA AMERICA, INC. | | | | |

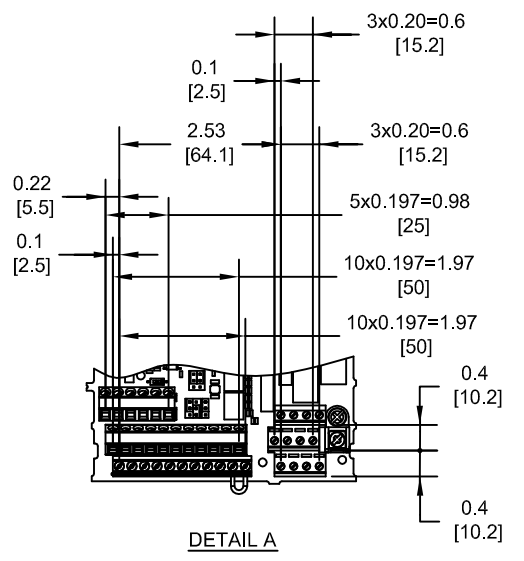
TERMINAL AND WIRING DETAILS (SCALE 1:8)
 PU2A0360U, PU2A0415U, PU4A0296U, PU4A0362U, PU5A0192U & PU5A0242U ONLY



TERMINAL AND WIRE SPECIFICATIONS FOR MAIN CIRCUIT AND GROUND

| MODEL # CIMR-PU | TERMINAL SYMBOL | TERMINAL SCREW | CLAMPING TORQUE lb.in.(N.m.) |
|--------------------|------------------|----------------|---------------------------------|
| 2A0360U | R/L1, S/L2, T/L3 | M12 | 283.2 TO 354.0 (32 TO 40) |
| 2A0415U | U/T1, V/T2, W/T3 | | |
| 4A0296U | ⊖, ⊕1 | | |
| 4A0362U | ⊕3 | M10 | 159.3 TO 203.6 (18 TO 23) |
| 5A0192U | ⊕3 | M12 | 283.2 TO 354.0 (32 TO 40) |
| 5A0242U | ⊕ | M12 | 283.2 TO 354.0 (32 TO 40) |

NOTE: REFER TO APPLICABLE CODES FOR PROPER WIRE TYPE AND SIZE

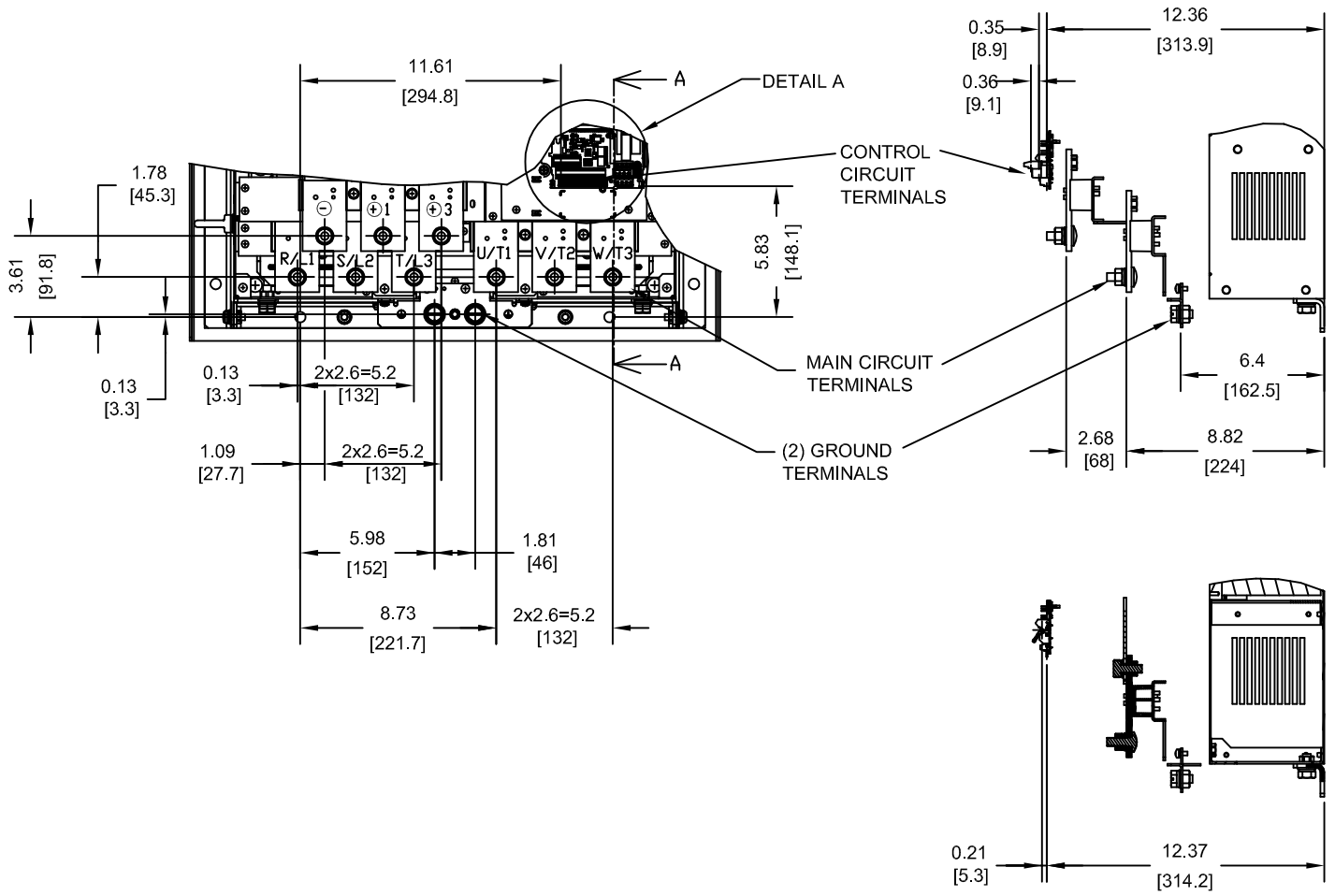


FOR ADDITIONAL DETAILS AND SPECIFICATIONS, CONSULT MANUAL

| | | | | | |
|--------------------------|-------------------|---------------------------------------|---|--|------------------|
| TOLERANCES / REFERENCES: | | | DRAWN: J. MATTAS DATE: 11-13-12 | TITLE: P1000 DIMENSION DRAWING FRAME SIZE 12 DESIGNED FOR IP54/TYPE 12 ENCLOSURES | |
| | | | CHECKED: J. PIOTROWSKI DATE: 1-18-13 | 2A0360U-0415U, 4A0250U-0362U, 4T0250U-0362U, 5A0192U-0242U | |
| | | TECH: J. BORJA DATE: 1-22-13 | APPROVED: J. CAIRO DATE: 5-29-13 | SIZE: A | REVISION: R00 |
| UNITS: IN [mm] | SCALE: BY VIEW | ORIGINAL DESIGN: - | DATE: - | DRAWING #: DD.P1K.FR12.FLNG | |
| | | | | PAGE 2 of 5 | |

THIS DOCUMENT AND INFORMATION CONTAINED IN IT ARE CONFIDENTIAL, AND CANNOT BE COPIED OR DISCLOSED IN WHOLE OR IN PART WITHOUT THE EXPRESS WRITTEN CONSENT OF YASKAWA AMERICA, INC.

TERMINAL AND WIRING DETAILS (SCALE 1:8)
PU4A0250U ONLY

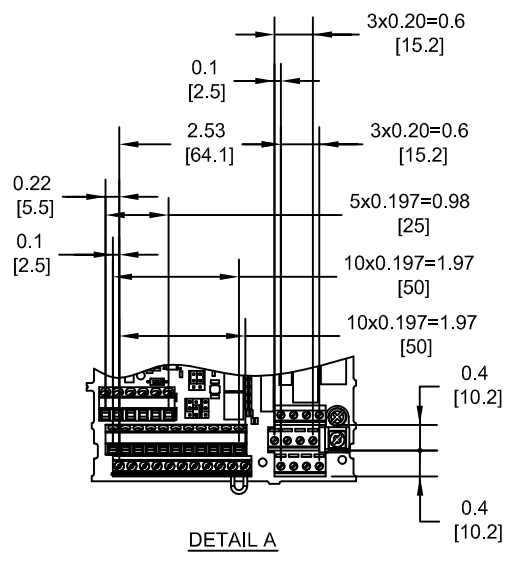


SECTION A-A

TERMINAL AND WIRE SPECIFICATIONS FOR
 MAIN CIRCUIT AND GROUND

| MODEL # CIMR-PU | TERMINAL SYMBOL | TERMINAL SCREW | CLAMPING TORQUE lb.in.(N.m.) |
|--------------------|--------------------|-------------------|---------------------------------|
| 4A0250U | R/L1, S/L2, T/L3 | M10 | 159.3 TO 203.6 (18 TO 23) |
| | U/T1, V/T2, W/T3 | | |
| | ⊖, ⊕1 | | |
| | ⊕3 | | |
| | ⊕ | M10 | 159.3 TO 203.6 (18 TO 23) |
| | ⊕ | M10 | 159.3 TO 203.6 (18 TO 23) |

NOTE: REFER TO APPLICABLE CODES FOR PROPER WIRE TYPE AND SIZE

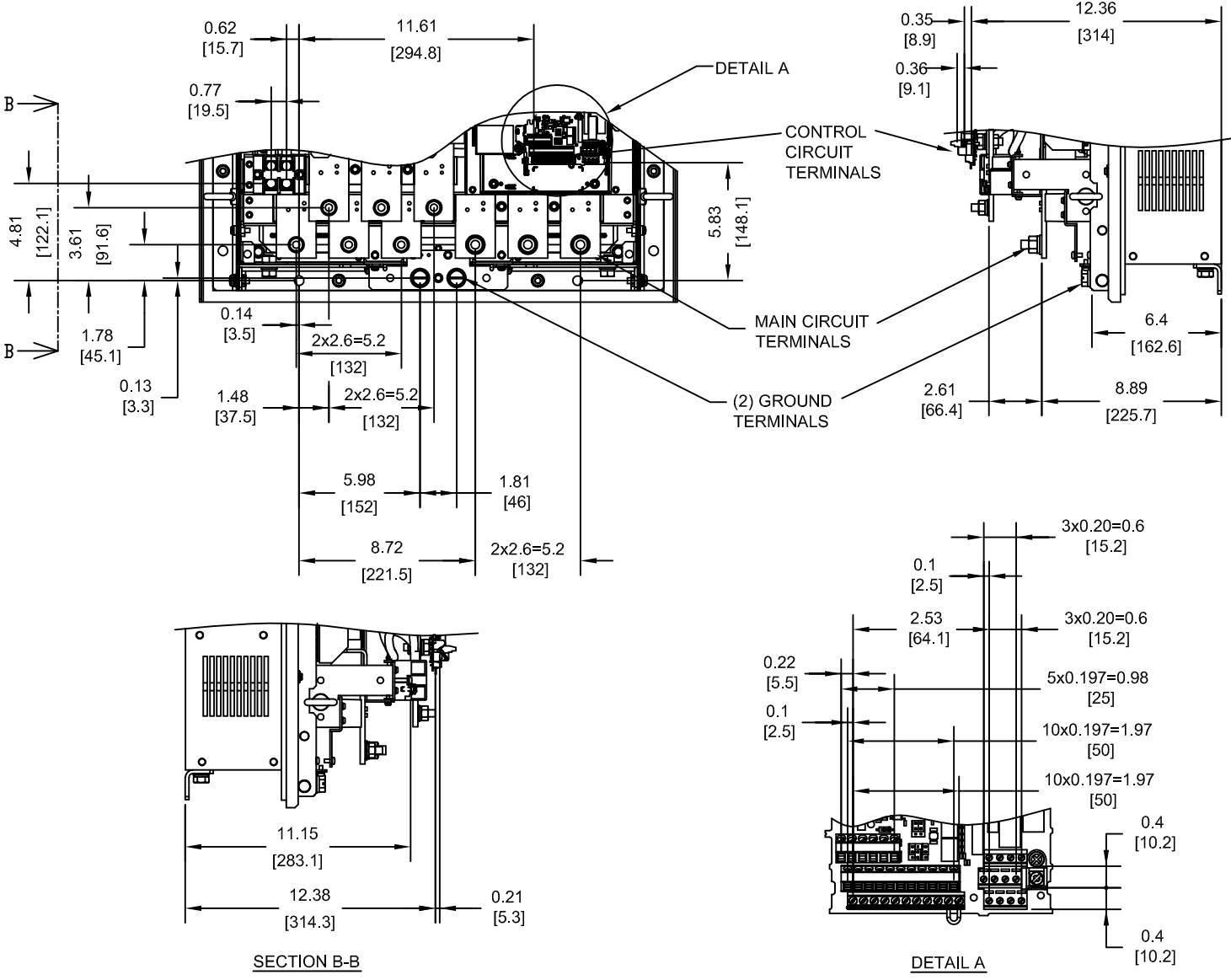


DETAIL A

FOR ADDITIONAL DETAILS AND SPECIFICATIONS, CONSULT MANUAL

| | | | | | |
|--------------------------|-------------------|--|--|---|--|
| TOLERANCES / REFERENCES: | | | DRAWN: J. MATTAS CHECKED: J. PIOTROWSKI TECH: J. BORJA APPROVED: J. CAIRO ORIGINAL DESIGN: - | DATE: 11-13-12 DATE: 1-18-13 DATE: 1-22-13 DATE: 5-29-13 DATE: - | TITLE: P1000 DIMENSION DRAWING FRAME SIZE 12 DESIGNED FOR IP54/TYPE 12 ENCLOSURES 2A0360U-0415U, 4A0250U-0362U, 4T0250U-0362U, 5A0192U-0242U SIZE: A REVISION: R00 DRAWING #: DD.P1K.FR12.FLNG |
| UNITS: IN[mm] | SCALE: BY VIEW | | THIS DOCUMENT AND INFORMATION CONTAINED IN IT ARE CONFIDENTIAL, AND CANNOT BE COPIED OR DISCLOSED IN WHOLE OR IN PART WITHOUT THE EXPRESS WRITTEN CONSENT OF YASKAWA AMERICA, INC. | PAGE 3 of 5 | |

TERMINAL AND WIRING DETAILS (SCALE 1:8)
 PU4T0250U, PU4T0296U & PU4T0362U ONLY



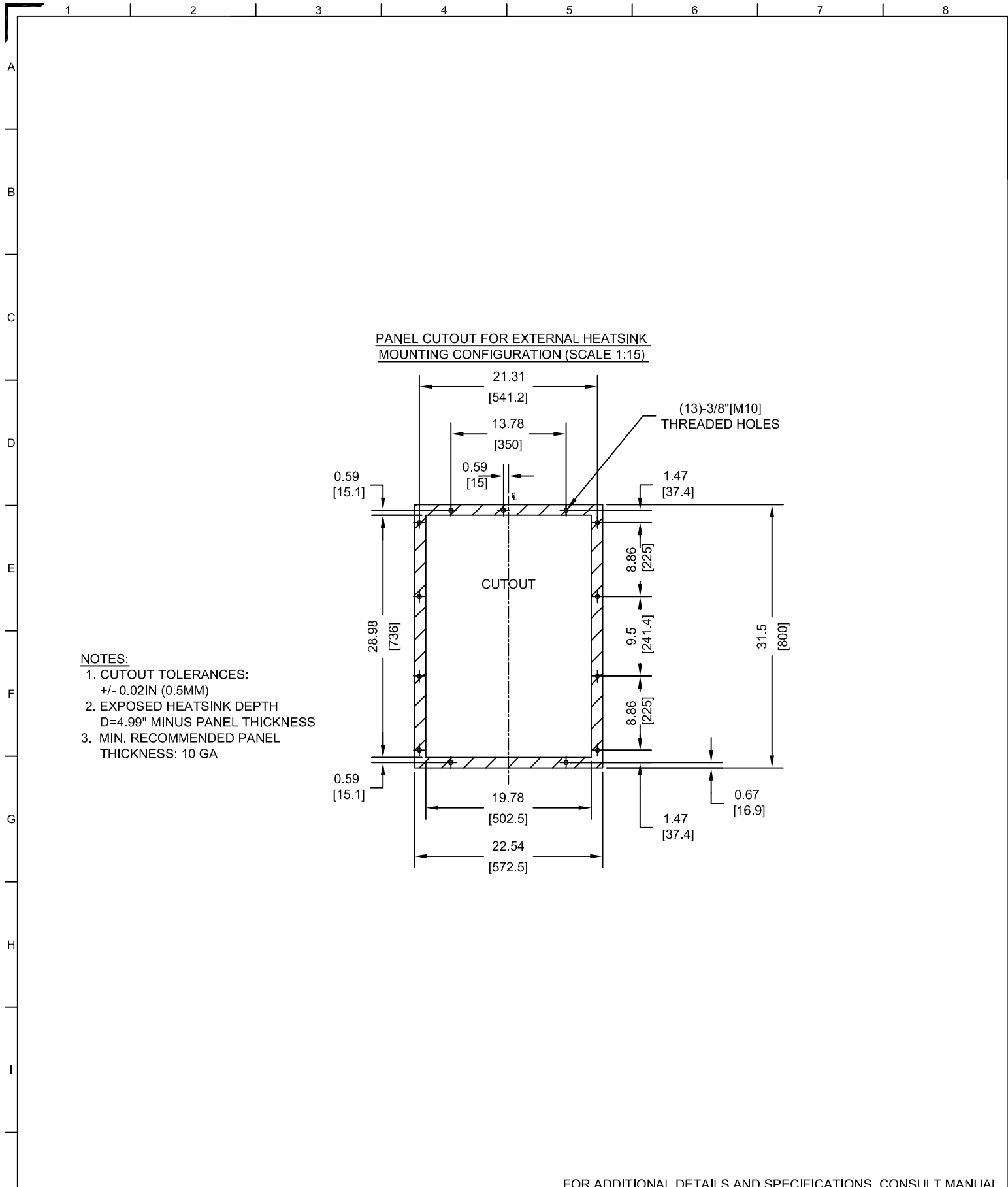
TERMINAL AND WIRE SPECIFICATIONS FOR
 MAIN CIRCUIT AND GROUND

| MODEL # CIMR-PU | TERMINAL SYMBOL | TERMINAL SCREW | CLAMPING TORQUE lb.in.(N.m.) | WIRE RANGE AWG(mm ²) |
|--------------------|------------------------|-------------------|---------------------------------|-------------------------------------|
| 4T0250U | R/L1, S/L2, T/L3 | M10 | 159 TO 204 (18 TO 23) | SEE NOTE |
| | R1/L11, S1/L21, T1/L31 | | | |
| | U/T1, V/T2, W/T3 | M6 | 22.1 TO 26.6 (2.5 TO 3.0) | 22-1/0 (0.3-53.5) |
| | ⊖, ⊕3 | | | |
| 4T0296U 4T0362U | R/L1, S/L2, T/L3 | M10 | 159 TO 204 (18 TO 23) | SEE NOTE |
| | R1/L11, S1/L21, T1/L31 | | | |
| | U/T1, V/T2, W/T3 | M12 | 283.2 TO 354.0 (32 TO 40) | SEE NOTE |
| | ⊖, ⊕3 | | | |
| | ⊕ | M12 | 283.2 TO 354.0 (32 TO 40) | SEE NOTE |

NOTE: REFER TO APPLICABLE CODES FOR PROPER WIRE TYPE AND SIZE

FOR ADDITIONAL DETAILS AND SPECIFICATIONS, CONSULT MANUAL

| | | | | | |
|--------------------------|-------------------|--|--|---|--|
| TOLERANCES / REFERENCES: | | | DRAWN: J. MATTAS CHECKED: J. PIOTROWSKI TECH: J. BORJA APPROVED: J. CAIRO ORIGINAL DESIGN: - | DATE: 11-13-12 DATE: 1-18-13 DATE: 1-22-13 DATE: 5-29-13 DATE: - | TITLE: P1000 DIMENSION DRAWING FRAME SIZE 12 DESIGNED FOR IP54/TYPE 12 ENCLOSURES 2A0360U-0415U, 4A0250U-0362U, 4T0250U-0362U, 5A0192U-0242U SIZE: A REVISION: R00 DRAWING #: DD.P1K.FR12.FLNG |
| UNITS: IN[mm] | SCALE: BY VIEW | | THIS DOCUMENT AND INFORMATION CONTAINED IN IT ARE CONFIDENTIAL, AND CANNOT BE COPIED OR DISCLOSED IN WHOLE OR IN PART WITHOUT THE EXPRESS WRITTEN CONSENT OF YASKAWA AMERICA, INC. | PAGE 4 of 5 | |



**PANEL CUTOUT FOR EXTERNAL HEATSINK
MOUNTING CONFIGURATION (SCALE 1:15)**

- NOTES:**
- CUTOUT TOLERANCES:
+/- 0.02IN (0.5MM)
 - EXPOSED HEATSINK DEPTH
D=4.99" MINUS PANEL THICKNESS
 - MIN. RECOMMENDED PANEL
THICKNESS: 10 GA

FOR ADDITIONAL DETAILS AND SPECIFICATIONS, CONSULT MANUAL

| | | | | | | | | |
|--------------------------|-------------------|--|--------------------------------------|-----------------------|--|---------------------------------------|------------|------------------|
| TOLERANCES / REFERENCES: | | <p>YASKAWA</p> <p><i>THIS DOCUMENT AND INFORMATION CONTAINED IN IT ARE CONFIDENTIAL, AND CANNOT BE COPIED OR DISCLOSED IN WHOLE OR IN PART WITHOUT THE EXPRESS WRITTEN CONSENT OF YASKAWA AMERICA, INC.</i></p> | DRAWN: J. MATTAS 11-13-12 | DATE: 11-13-12 | TITLE: P1000 DIMENSION DRAWING FRAME SIZE 12 DESIGNED FOR IP54/TYPE 12 ENCLOSURES 2A0360U-0415U, 4A0250U-0362U, 4T0250U-0362U, 5A0192U-0242U | | | |
| | | | CHECKED: J. PIOTROWSKI 1-18-13 | DATE: 1-18-13 | TECH: J. BORJA 1-22-13 | DATE: 1-22-13 | SIZE: A | REVISION: R00 |
| UNITS: IN [mm] | SCALE: BY VIEW | APPROVED: J. CAIRO 5-29-13 | DATE: 5-29-13 | ORIGINAL DESIGN: - | DATE: - | DRAWING #: DD.P1K.FR12.FLNG | | |